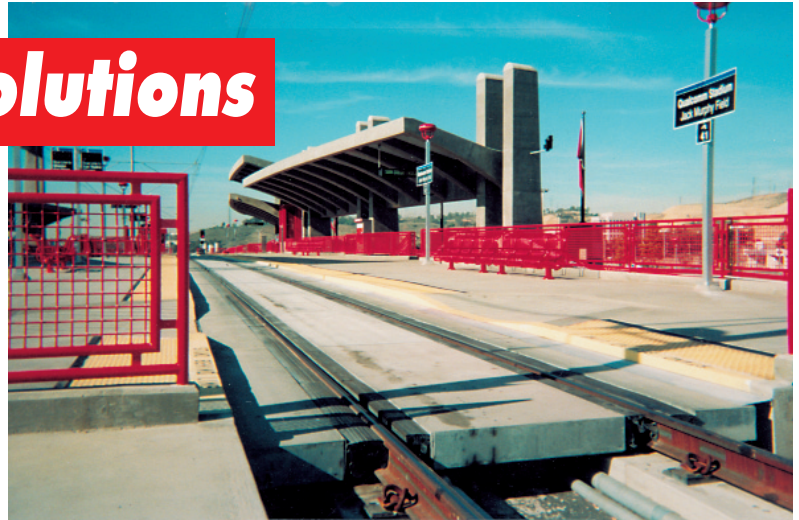


Grade Crossing Solutions

Manufacturers of high quality rubber products, specializing in systems custom engineered to your application.



MTDB - San Diego, California. Installed July 1997

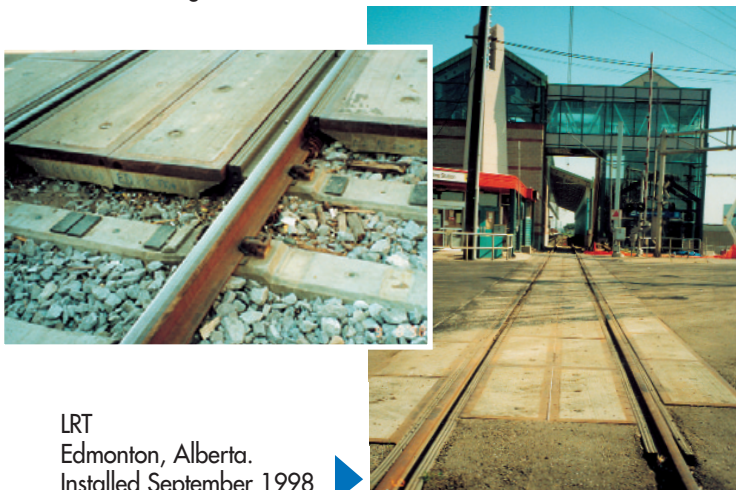


METRA - Chicago, Illinois.
 Installed August 1992



RTD
 Denver, Colorado.
 Installed October 1993

Northern Indiana Commuter Rail.
 Michigan City Indiana.
 Installed July 1998



LRT
 Edmonton, Alberta.
 Installed September 1998

